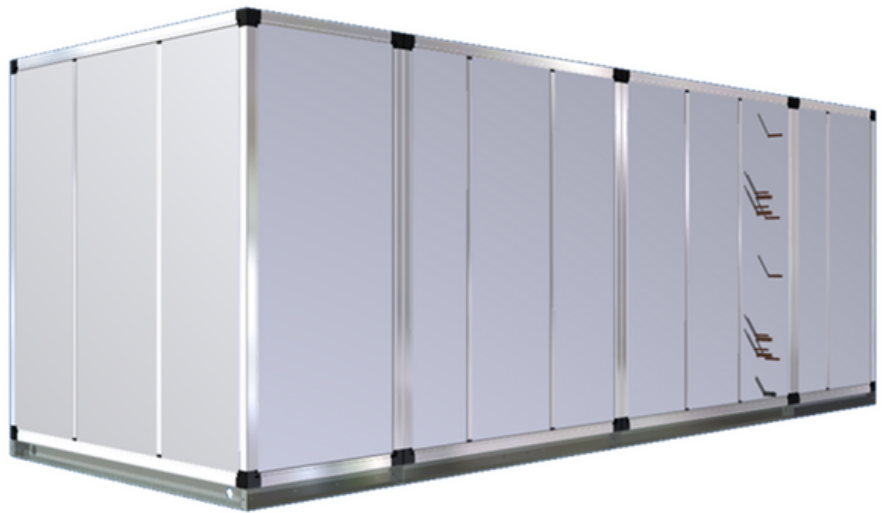


# BROCHURE

## Modular Air Handling Unit

**ThermalTrue®**  
HVAC & R

### Modular AHU Series TDM



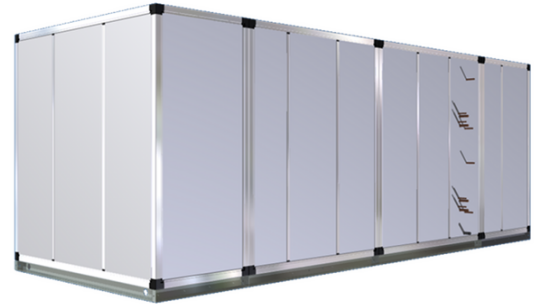


## ▶ GENERAL

The DM Series Air Handling Modules are offered as standard modular series or for custom applications.

Custom units serve to adapt to special dimensional requests, special unit configuration or arrangement, special coil configurations and performance, special blower and drive package requirements, special corrosion resistance requirements, special insulation requirements, and special hazardous environment requirements.

Standard modular series are offered in preset dimensions through a series of 24 sizes to cater for airflow range of 1190 CMH to 70500 CMH ( 700 CFM to 41500 CFM ) and a total static pressure range of up to 1500 Pa ( 6" WG ).



Both customized and standard units are constructed from true thermal break systems using high tensile precision extruded aluminum corner posts and center posts assembled with weather-proof nylon grade corner pieces and joints.

Panels are sandwiched double skin type with fire resistant high density pressure injected polyurethane insulation for rigidity and excellent K factor.

Coils may be chilled water or direct expansion types. Versatile selection of coil is possible through a wide range of tubes (3/8", 1/2" or 5/8") and various alternatives of fin material (plain aluminum, hydrophilic aluminum, epoxy coated aluminum, plain copper or coated copper).

All units are supported with selection software and performance reports for coil and blowers.

## ▶ FEATURES

### ● CABINET

Framing is achieved through a system of true thermal break extruded aluminum profiles with molded joints of high grade weather-proof nylon. Outer covers on profiles are truly isolated from inner walls with insulator dividers.

Panels are offered in choice of 15mm, 25mm or 50mm and are constructed from sandwiched double skin configuration. Outer skin is 0.45mm painted steel, while inner skin is 0.40mm galvanized steel. Both are thermally isolated by a fire resistant pressure injected polyurethane insulation layer of density 40kg/m<sup>3</sup> and K factor of 0.017 W/M deg K. Edges are held within an extruded plastic panel skirt to ensure true thermal isolation. Excellent thermal and sound insulation is our winning edge.



Panels are sealed securely with gaskets to provide air-tight assembly and excellent thermal isolation. Sections are similarly jointed on site with gaskets provided.

FALL sections rest on a base frame of thick galvanized or epoxy coated steel constructed with a bolt & nut assembly format to allow for versatility in handling, lifting and positioning on site. Sections are modular and are easily assembled on site with joining clamps and gaskets.

## ● **BLOWERS**

The blower is a single unit of double inlet construction with forward or backward or aerofoil centrifugal wheel. All blowers are AMCA rated. Blower wheels are statically and dynamically balanced for quiet and vibration controlled performance. Housing and frame are of galvanized steel.

## ● **MOTOR AND DRIVE PACKAGE**

Motor is of TEFC/TEFV type with Class F insulation and IP55 protection. Motor power is selected to support the required static and blower power requirements. Drive package shall be precision pulley and V-belt type to meet the computer recommended airflow.

Blower and motor are mounted on uni-base channels which are isolated from the unit structure through a series of rated spring or rubber isolators (depending on the load). Discharge at blower is isolated from the unit structure with accordion type flexible canvas connections. Excellent noise and vibration isolation is achieved.

## ● **COILS**

The finned tube cooling coils are constructed from fins mechanically bonded to the tubes. Coil housing is of galvanized endplates and horizontal plates. Headers are male threaded to provide pipe connections in the field. Drain and air bleed ports are provided.

Coils are tested to 2400 KPa (350 psig). Maximum standard operating pressure is 1700 KPa (250 psig). Coil connection may be left or right side upon order (in accordance with the convention of air flow direction into the coil face).

## ● **DRAIN PAN**

Drain pan is of powder coated galvanized steel with 10mm PE insulation as a better measure. Drain pan is mounted with an incline to allow faster and complete condensate drain off. If sectionalized, upper coil would have an additional overhanging drip pan for capture of condensate.

## ● **FILTER**

Filter section provides option for pre filters or secondary filters. Pre filters are nominal 2" panel extended surface V-form type within an anodized aluminum frame. Filter media is of a washable synthetic type with arrestance of 75% to 90%. Media is backed with pleated linings which provide firm support to the media, providing longer life over a higher frequency of washings.



Secondary filters may be offered as filter bag type with efficiency of 85% or 95%.with depth up to 21" or as carbon odor removing filters, or as 4" panel pleated filters.

Filter doors provide service access to the filters from either side. Drain pan is of powder coated galvanized steel with 10mm PE insulation as a better measure. Drain pan is mounted with an incline to allow faster and complete condensate drain off. If sectionalized, upper coil would have an additional overhanging drip pan for capture of condensate.

## MIXING BOX DAMPERS

Mixing box may be requested upon order. Dampers are a precision opposed blade type. Dampers are operated by either actuator or manually set via a quadrant and lock screw Precision molded nylon gears and gaskets provide smooth lubricant-free operation and low leakage.

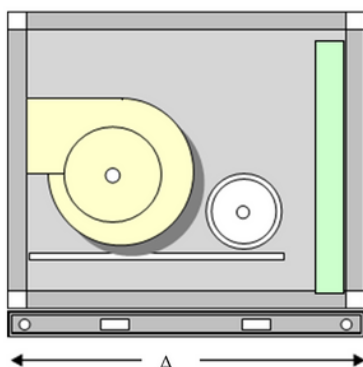
## ACCESS

Service access is provided through side access panels or door mounted on nylon hinges and held close by nylon compression latches. Pressure test outlets are provided for monitoring filter conditions. Additional view ports may be requested upon order.

## SHIPMENT PACKING

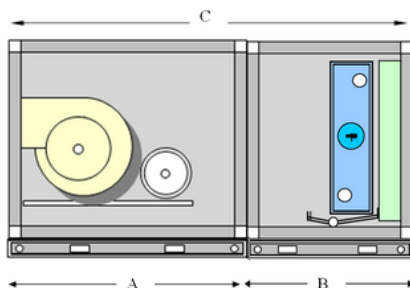
Units would be shipped as complete built up if can accommodate the standard container height or width are shipped. Otherwise, shipment would be in Complete Knock Down form. Complete Knock Down form may be requested upon order subject to customer needs.

## DIMENSION



**Horizontal Configuration Type 1**

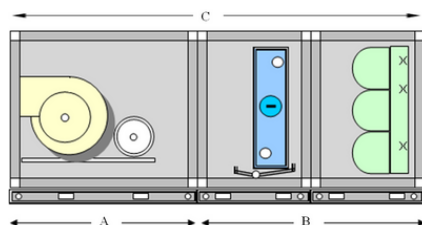
Horizontal Configuration Type 1					
Type 1	AirFlow		Common Dimension		Blower Section Blower + Pre Filter
Model	CMH	CFM	Height (mm)	Width (mm)	A
0404	2.326	1.393	804	804	1.004
0407	3.697	2.214	804	1.104	1.004
0410	5.069	3.036	804	1.404	1.004
0413	6.440	3.857	804	1.704	1.004
0707	6.012	3.601	1.104	1.104	1.004
0710	8.240	4.935	1.104	1.404	1.004
0713	10.469	6.270	1.104	1.704	1.304
0715	11.956	7.161	1.104	1.904	1.304
1010	11.408	6.833	1.404	1.404	1.304
1013	14.494	8.681	1.404	1.704	1.304
1015	16.553	9.914	1.404	1.904	1.504
1019	20.668	12.379	1.404	2.304	1.504
1021	22.723	13.610	1.404	2.504	1.504
1315	20.228	12.116	1.704	1.904	1.504
1319	25.258	15.128	1.704	2.304	1.504
1321	27.774	16.635	1.704	2.504	1.704
1519	27.554	16.503	1.904	2.304	1.704
1521	30.298	18.147	1.904	2.504	1.704
1819	34.445	20.631	2.204	2.304	1.704
1821	37.872	22.683	2.204	2.504	1.904
1823	41.303	24.736	2.204	2.704	1.904
1827	48.161	28.846	2.204	3.104	2.104
2027	51.372	30.769	2.404	3.104	2.104
2233	70.136	42.008	2.604		



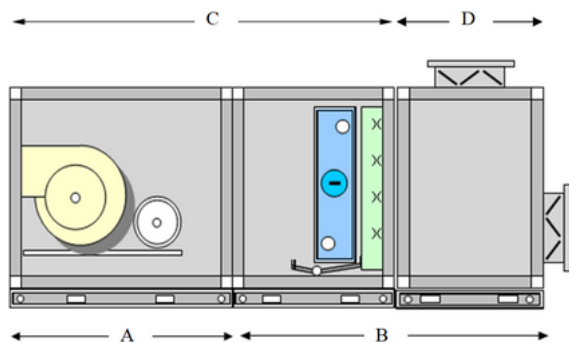
**Horizontal Configuration Type 2**

Type 2	AirFlow		Common Dimension		Blower Section	Cooling Coil Section Coil + Pre Filter	Total Section
Model	CMH	CFM	Height (mm)	Width (mm)	A	B	C
0404	2.326	1.393	804	804			1.608
0407	3.697	2.214	804	1.104			1.608
0410	5.069	3.036	804	1.404			1.708
0413	6.440	3.857	804	1.704			1.708
0707	6.012	3.601	1.104	1.104			1.708
0710	8.240	4.935	1.104	1.404			1.708
0713	10.469	6.270	1.104	1.704			1.908
0715	11.956	7.161	1.104	1.904			1.908
1010	11.408	6.833	1.404	1.404			1.908
1013	14.494	8.681	1.404	1.704			1.908
1015	16.553	9.914	1.404	1.904			2.108
1019	20.668	12.379	1.404	2.304			2.108
1021	22.723	13.610	1.404	2.504			2.108
1315	20.228	12.116	1.704	1.904			2.108
1319	25.258	15.128	1.704	2.304			2.108
1321	27.774	16.635	1.704	2.504			
1519	27.554	16.503	1.904	2.304			
1521	30.298	18.147	1.904	2.504			
1819	34.445	20.631	2.204	2.304			
1821	37.872	22.683	2.204	2.504			
1823	41.303	24.736	2.204	2.704			

**Horizontal Configuration Type 3**

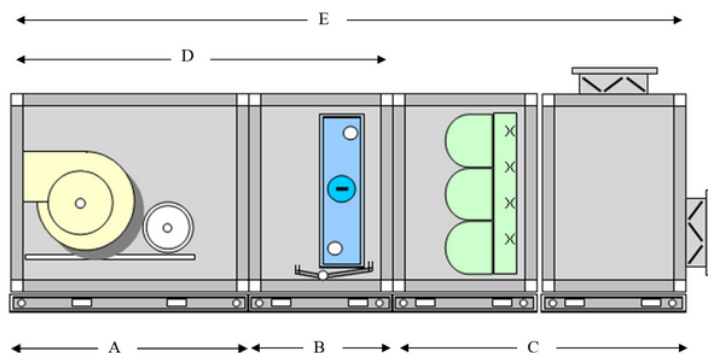


Type 3	AirFlow		Common Dimension		Blower Section	Cooling Coil Section Coil + Pre Filter +	Total Section
Model	CMH	CFM	Height (mm)	Width (mm)	A	B	C
0404	2.326	1.393	804	804	904	1.308	2.212
0407	3.697	2.214	804	1.104	904	1.308	2.212
0410	5.069	3.036	804	1.404	1.004	1.308	2.312
0413	6.440	3.857	804	1.704	1.004	1.308	2.312
0707	6.012	3.601	1.104	1.104	1.004	1.308	2.312
0710	8.240	4.935	1.104	1.404	1.004	1.308	2.312
0713	10.469	6.270	1.104	1.704	1.204	1.308	2.512
0715	11.956	7.161	1.104	1.904	1.204	1.308	2.512
1010	11.408	6.833	1.404	1.404	1.204	1.308	2.512
1013	14.494	8.681	1.404	1.704	1.204	1.308	2.512
1015	16.553	9.914	1.404	1.904	1.404	1.308	2.712
1019	20.668	12.379	1.404	2.304	1.404	1.308	2.712
1021	22.723	13.610	1.404	2.504	1.404	1.308	2.712
1315	20.228	12.116	1.704	1.904	1.404	1.308	2.712
1319	25.258	15.128	1.704	2.304	1.404	1.308	2.712
1321	27.774	16.635	1.704	2.504	1.604	1.308	2.912
1519	27.554	16.503	1.904	2.304	1.604	1.308	2.912
1521	30.298	18.147	1.904	2.504	1.604	1.308	2.912
1819	34.445	20.631	2.204	2.304	1.604	1.308	2.912
1821	37.872	22.683	2.204	2.504	1.804	1.308	3.112
1823	41.303	24.736	2.204	2.704	1.804	1.308	3.112
1827	48.161	28.846	2.204	3.104	2.004	1.308	3.312
2027	51.372	30.769	2.404	3.104	2.004	1.308	3.312
2233	70.136	42.008	2.604	3.704	2.204	1.308	3.512


**Horizontal Configuration Type 4**

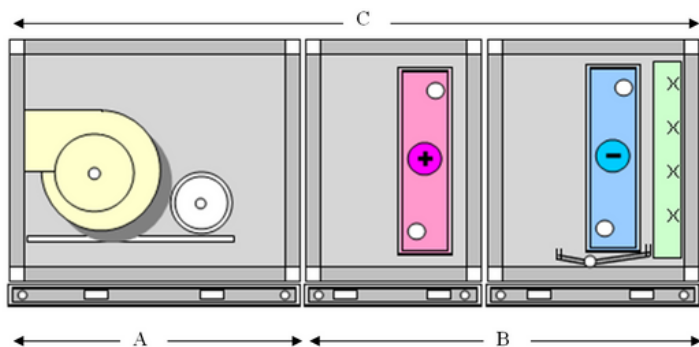
Type 4	AirFlow		Common Dimension		Blower Section	Cooling Coil Section Coil + Pre Filter	Mixing Box Section	Total Section
Model	CMH	CFM	Height (mm)	Width (mm)		E		E
0404	2.326	1.393	804	804				2.112
0407	3.697	2.214	804	1.104				2.112
0410	5.069	3.036	804	1.404				2.212
0413	6.440	3.857	804	1.704				2.212
Model	CMH	CFM	Height (mm)	Width (mm)		C	D	E
0707	6.012	3.601	1.104	1.104		1.708	704	2.412
0710	8.240	4.935	1.104	1.404		1.708	704	2.412
0713	10.469	6.270	1.104	1.704		1.908	704	2.612
0715	11.956	7.161	1.104	1.904		1.908	704	2.612
1010	11.408	6.833	1.404	1.404		1.908	704	2.612
1013	14.494	8.681	1.404	1.704		1.908	704	2.612
1015	16.553	9.914	1.404	1.904		2.108	704	2.812
1019	20.668	12.379	1.404	2.304		2.108	704	2.812
1021	22.723	13.610	1.404	2.504		2.108	704	2.812
1315	20.228	12.116	1.704	1.904		2.108	804	2.912
1319	25.258	15.128	1.704	2.304		2.108	804	2.912
Model	CMH	CFM	Height (mm)	Width (mm)	A	B		E
1321	27.774	16.635	1.704	2.504	1.604	1.508		3.112
1519	27.554	16.503	1.904	2.304	1.604	1.708		3.312
1521	30.298	18.147	1.904	2.504	1.604	1.708		3.312
1819	34.445	20.631	2.204	2.304	1.604	1.708		3.312
1821	37.872	22.683	2.204	2.504	1.804	1.708		3.512
1823	41.303	24.736	2.204	2.704	1.804	1.708		3.512
1827	48.161	28.846	2.204	3.104	2.004	1.808		3.812
2027	51.372	30.769	2.404	3.104	2.004	1.808		3.812
2233	70.136	42.008	2.604	3.704	2.204	1.808		4.012





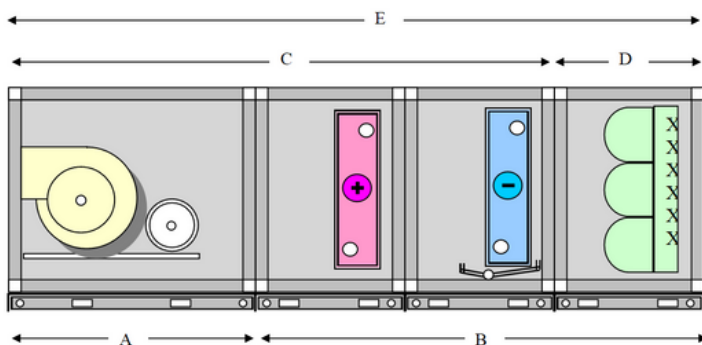
### Horizontal Configuration Type 5

Type 5	Air Flow		Common Dimension		Blower Only	Cooling Coil Only	Pre Filter & Secondary Filter	Mixing Box Only	Total Section
Model	CMH	CFM	Height (mm)	Width (mm)	D		C		E
0404	2.326	1.393	804	804	1.508		1.208		2.716
0407	3.697	2.214	804	1.104	1.508		1.208		2.716
0410	5.069	3.036	804	1.404	1.608		1.208		2.816
0413	6.440	3.857	804	1.704	1.608		1.208		2.816
0707	6.012	3.601	1.104	1.104	1.608		1.408		3.016
0710	8.240	4.935	1.104	1.404	1.608		1.408		3.016
0713	10.469	6.270	1.104	1.704	1.808		1.408		3.216
0715	11.956	7.161	1.104	1.904	1.808		1.408		3.216
1010	11.408	6.833	1.404	1.404	1.808		1.408		3.216
1013	14.494	8.681	1.404	1.704	1.808		1.408		3.216
1015	16.553	9.914	1.404	1.904	2.008		1.408		3.416
1019	20.668	12.379	1.404	2.304	2.008		1.408		3.416
1021	22.723	13.610	1.404	2.504	2.008		1.408		3.416
1315	20.228	12.116	1.704	1.904	2.008		1.508		3.516
1319	25.258	15.128	1.704	2.304	2.008		1.508		3.516
Model	CMH	CFM	Height (mm)	Width (mm)	A	B	C		E
1321	27.774	16.635	1.704	2.504	1.604	604	1.508		3.716
1519	27.554	16.503	1.904	2.304	1.604	604	1.708		3.916
1521	30.298	18.147	1.904	2.504	1.604	604	1.708		3.916
1819	34.445	20.631	2.204	2.304	1.604	604	1.708		3.916
1821	37.872	22.683	2.204	2.504	1.804	604	1.708		4.116
1823	41.303	24.736	2.204	2.704	1.804	604	1.708		4.116
1827	48.161	28.846	2.204	3.104	2.004	604	1.808		4.416
2027	51.372	30.769	2.404	3.104	2.004	604	1.808		4.416


**Horizontal Configuration Type 6**

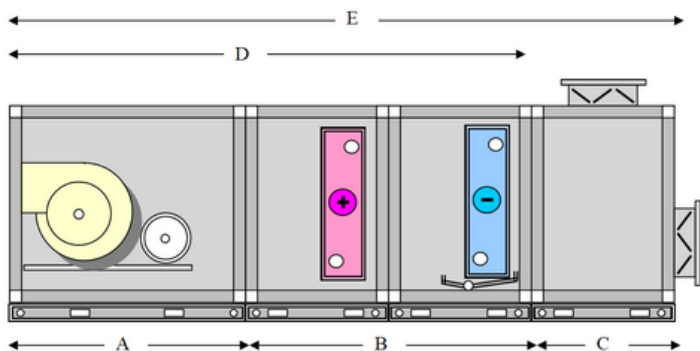
Type 6	AirFlow		Common Dimension		Blower Only	Heating Coil Only	Cooling Coil & Pre Filter	Total Section
Model	CMH	CFM	Height (mm)	Width (mm)	C			C
0404	2.326	1.393	804	804				2.108
0407	3.697	2.214	804	1.104				2.108
Model	CMH	CFM	Height (mm)	Width (mm)	A	B		C
0410	5.069	3.036	804	1.404	1.004	1.204		2.208
0413	6.440	3.857	804	1.704	1.004	1.204		2.208
0707	6.012	3.601	1.104	1.104	1.004	1.204		2.208
0710	8.240	4.935	1.104	1.404	1.004	1.204		2.208
0713	10.469	6.270	1.104	1.704	1.204	1.204		2.408
0715	11.956	7.161	1.104	1.904	1.204	1.204		2.408
1010	11.408	6.833	1.404	1.404	1.204	1.204		2.408
1013	14.494	8.681	1.404	1.704	1.204	1.204		2.408
1015	16.553	9.914	1.404	1.904	1.404	1.204		2.608
1019	20.668	12.379	1.404	2.304	1.404	1.204		2.608
1021	22.723	13.610	1.404	2.504	1.404	1.204		2.608
1315	20.228	12.116	1.704	1.904	1.404	1.204		2.608
1319	25.258	15.128	1.704	2.304	1.404	1.204		2.608
1321	27.774	16.635	1.704	2.504	1.604	1.204		2.808
1519	27.554	16.503	1.904	2.304	1.604	1.204		2.808
1521	30.298	18.147	1.904	2.504	1.604	1.204		2.808
1819	34.445	20.631	2.204	2.304	1.604	1.204		2.808
1821	37.872	22.683	2.204	2.504	1.804	1.204		3.008
1823	41.303	24.736	2.204	2.704	1.804	1.204		3.008
1827	48.161	28.846	2.204	3.104	2.004	1.204		3.208
2027	51.372	30.769	2.404	3.104	2.004	1.204		3.208



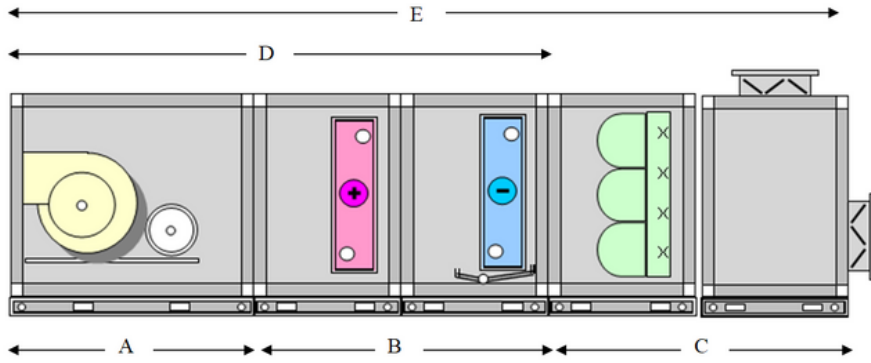


### Horizontal Configuration Type 7

Type 7	AirFlow		Common Dimension		Blower Only	Heating Coil Only	Cooling Coil Only	Pre Filter & Secondary Filter	Total Section
Model	CMH	CFM	Height (mm)	Width (mm)	C			D	E
0404	2.326	1.393	804	804	2.008			704	2.712
0407	3.697	2.214	804	1.104	2.008			704	2.712
0410	5.069	3.036	804	1.404	2.108			704	2.812
0413	6.440	3.857	804	1.704	2.108			704	2.812
0707	6.012	3.601	1.104	1.104	2.108			704	2.812
0710	8.240	4.935	1.104	1.404	2.108			704	2.812
Model	CMH	CFM	Height (mm)	Width (mm)	A	B		C	
0713	10.469	6.270	1.104	1.704	1.204	1.808		3.012	
0715	11.956	7.161	1.104	1.904	1.204	1.808		3.012	
1010	11.408	6.833	1.404	1.404	1.204	1.808		3.012	
1013	14.494	8.681	1.404	1.704	1.204	1.808		3.012	
1015	16.553	9.914	1.404	1.904	1.204	1.808		3.012	
1019	20.668	12.379	1.404	2.304	1.204	1.808		3.012	
1021	22.723	13.610	1.404	2.504	1.404	1.808		3.212	
1315	20.228	12.116	1.704	1.904	1.404	1.808		3.212	
1319	25.258	15.128	1.704	2.304	1.404	1.808		3.212	
1321	27.774	16.635	1.704	2.504	1.604	1.808		3.412	
1519	27.554	16.503	1.904	2.304	1.604	1.808		3.412	
1521	30.298	18.147	1.904	2.504	1.604	1.808		3.412	
1819	34.445	20.631	2.204	2.304	1.604	1.808		3.412	
1821	37.872	22.683	2.204	2.504	1.804	1.808		3.612	
1823	41.303	24.736	2.204	2.704	1.804	1.808		3.612	
1827	48.161	28.846	2.204	3.104	2.004	1.808		3.812	
2027	51.372	30.769	2.404	3.104	2.004	1.808		3.812	


**Horizontal Configuration Type 8**

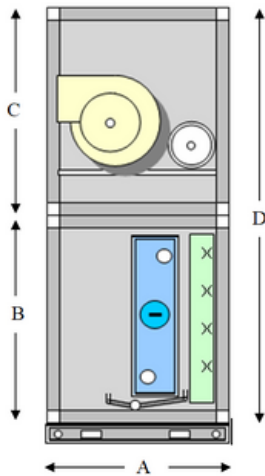
Type 6	AirFlow		Common Dimension		Blower Only	Heating Coil Only	Cooling Coil & Pre Filter	Mixing Box Only	Total Section
Model	CMH	CFM	Height (mm)	Width (mm)	D			C	E
0404	2.326	1.393	804	804	2.108			504	2.612
0407	3.697	2.214	804	1.104	2.108			504	2.612
Model	CMH	CFM	Height (mm)	Width (mm)	A	B		C	E
0410	5.069	3.036	804	1.404	1.004	1.204		504	2.712
0413	6.440	3.857	804	1.704	1.004	1.204		504	2.712
0707	6.012	3.601	1.104	1.104	1.004	1.204		704	2.912
0710	8.240	4.935	1.104	1.404	1.004	1.204		704	2.912
0713	10.469	6.270	1.104	1.704	1.204	1.204		704	3.112
0715	11.956	7.161	1.104	1.904	1.204	1.204		704	3.112
1010	11.408	6.833	1.404	1.404	1.204	1.204		704	3.112
1013	14.494	8.681	1.404	1.704	1.204	1.204		704	3.112
1015	16.553	9.914	1.404	1.904	1.404	1.204		704	3.312
1019	20.668	12.379	1.404	2.304	1.404	1.204		704	3.312
1021	22.723	13.610	1.404	2.504	1.404	1.204		704	3.312
1315	20.228	12.116	1.704	1.904	1.404	1.204		804	3.412
1319	25.258	15.128	1.704	2.304	1.404	1.204		804	3.412
1321	27.774	16.635	1.704	2.504	1.604	1.204		804	3.612
1519	27.554	16.503	1.904	2.304	1.604	1.204		1004	3.812
1521	30.298	18.147	1.904	2.504	1.604	1.204		1004	3.812
1819	34.445	20.631	2.204	2.304	1.604	1.204		1004	3.812
1821	37.872	22.683	2.204	2.504	1.804	1.204		1004	4.012
1823	41.303	24.736	2.204	2.704	1.804	1.204		1004	4.012
1827	48.161	28.846	2.204	3.104	2.004	1.204		1004	4.312
2027	51.372	30.769	2.404	3.104	2.004	1.204		1004	4.312


**Horizontal Configuration Type 9**

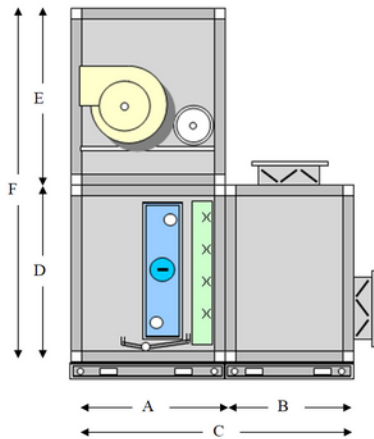
Type 6	AirFlow		Common Dimension		Blower Only	Heating & Cooling	Mixing Box & Filter	Total Section
Model	CMH	CFM	Height (mm)	Width (mm)	A	B	C	E
0404	2.326	1.393	804	804	804	1.204	1.208	3.216
0407	3.697	2.214	804	1.104	804	1.204	1.208	3.216
Model	CMH	CFM	Height (mm)	Width (mm)	A	B	C	E
0410	5.069	3.036	804	1.404	904	1.204	1.208	3.316
0413	6.440	3.857	804	1.704	904	1.204	1.208	3.316
0707	6.012	3.601	1.104	1.104	904	1.204	1.408	3.516
0710	8.240	4.935	1.104	1.404	904	1.204	1.408	3.516
0713	10.469	6.270	1.104	1.704	1.204	1.204	1.408	3.816
0715	11.956	7.161	1.104	1.904	1.204	1.204	1.408	3.816
1010	11.408	6.833	1.404	1.404	1.204	1.204	1.408	3.816
1013	14.494	8.681	1.404	1.704	1.204	1.204	1.408	3.816
1015	16.553	9.914	1.404	1.904	1.404	1.204	1.408	4.016
1019	20.668	12.379	1.404	2.304	1.404	1.204	1.408	4.016
1021	22.723	13.610	1.404	2.504	1.404	1.204	1.408	4.016
1315	20.228	12.116	1.704	1.904	1.404	1.204	1.508	4.116
1319	25.258	15.128	1.704	2.304	1.404	1.204	1.508	4.116
1321	27.774	16.635	1.704	2.504	1.604	1.204	1.508	4.316
1519	27.554	16.503	1.904	2.304	1.604	1.204	1.708	4.516
1521	30.298	18.147	1.904	2.504	1.604	1.204	1.708	4.516
1819	34.445	20.631	2.204	2.304	1.604	1.204	1.708	4.516
1821	37.872	22.683	2.204	2.504	1.804	1.204	1.708	4.716
1823	41.303	24.736	2.204	2.704	1.804	1.204	1.708	4.716
1827	48.161	28.846	2.204	3.104	2.004	1.204	1.808	5.016
2027	51.372	30.769	2.404	3.104	2.004	1.204	1.808	5.016



### Vertical Configuration Type 1

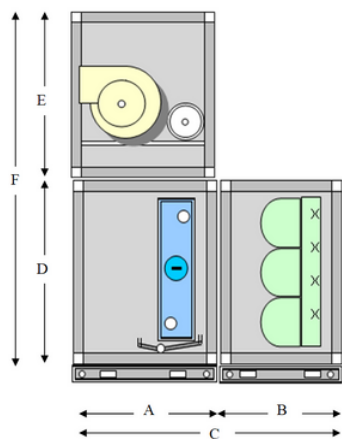


Type 1	AirFlow		Common Dimension	Length (mm)	Blower	Coil + Pre Filter	Total Section
					Height (mm)		
Model	CMH	CFM	Width (mm)	A	D		D
0404	2.326	1.393	804	904	1.608		1.608
0407	3.697	2.214	1.104	904	1.608		1.608
0410	5.069	3.036	1.404	1.004	1.608		1.608
0413	6.440	3.857	1.704	1.004	1.608		1.608
0707	6.012	3.601	1.104	1.004	1.908		1.908
Model	CMH	CFM	Width (mm)	A	C	B	D
0710	8.240	4.935	1.404	1.004	1.104	1.104	2.208
0713	10.469	6.270	1.704	1.204	1.104	1.104	2.208
0715	11.956	7.161	1.904	1.204	1.104	1.104	2.208
1010	11.408	6.833	1.404	1.204	1.104	1.404	2.508
1013	14.494	8.681	1.704	1.204	1.204	1.404	2.608
1015	16.553	9.914	1.904	1.404	1.404	1.404	2.808
1019	20.668	12.379	2.304	1.404	1.404	1.404	2.808
1021	22.723	13.610	2.504	1.404	1.404	1.404	2.808
1315	20.228	12.116	1.904	1.404	1.404	1.704	3.108
1319	25.258	15.128	2.304	1.404	1.604	1.704	3.308



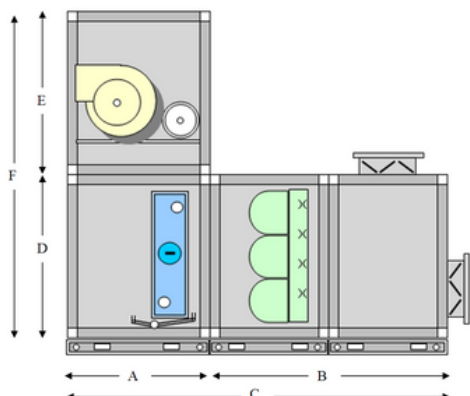
### Vertical Configuration Type 2

Type 2	AirFlow		Common Dimension	Blower/Coil	Mixing Box	Total Section	Blower	Coil + Pre Filter	Total Section
				Length (mm)			Height (mm)		
Model	CMH	CFM	Width (mm)	A	B	C	F		F
0404	2.326	1.393	804	904	504	1.408	1.608		1.608
0407	3.697	2.214	1.104	904	504	1.408	1.608		1.608
0410	5.069	3.036	1.404	1.004	504	1.508	1.608		1.608
0413	6.440	3.857	1.704	1.004	504	1.508	1.608		1.608
0707	6.012	3.601	1.104	1.004	704	1.708	1.908		1.908
Model	CMH	CFM	Width (mm)	A	B	C	E	D	F
0710	8.240	4.935	1.404	1.004	704	1.708	1.104	1.104	2.208
0713	10.469	6.270	1.704	1.204	704	1.908	1.104	1.104	2.208
0715	11.956	7.161	1.904	1.204	704	1.908	1.104	1.104	2.208
1010	11.408	6.833	1.404	1.204	704	1.908	1.104	1.404	2.508
1013	14.494	8.681	1.704	1.204	704	1.908	1.204	1.404	2.608
1015	16.553	9.914	1.904	1.404	704	2.108	1.404	1.404	2.808
1019	20.668	12.379	2.304	1.404	704	2.108	1.404	1.404	2.808
1021	22.723	13.610	2.504	1.404	704	2.108	1.404	1.404	2.808
1315	20.228	12.116	1.904	1.404	804	2.208	1.404	1.704	3.108
1319	25.258	15.128	2.304	1.404	804	2.208	1.604	1.704	3.308



### Vertical Configuration Type 3

Type 3	AirFlow		Common Dimension	Blower/Coil	Pre Filter + Sec. Filter	Total Section	Blower	Coil	Total Section
				Length (mm)			Height (mm)		
Model	CMH	CFM	Width (mm)	A	B	C	F	F	F
0404	2.326	1.393	804	904	704	1.608	1.608	1.608	1.608
0407	3.697	2.214	1.104	904	704	1.608	1.608	1.608	1.608
0410	5.069	3.036	1.404	1.004	704	1.708	1.608	1.608	1.608
0413	6.440	3.857	1.704	1.004	704	1.708	1.608	1.608	1.608
0707	6.012	3.601	1.104	1.004	704	1.708	1.908	1.908	1.908
Model	CMH	CFM	Width (mm)	A	B	C	E	D	F
0710	8.240	4.935	1.404	1.004	704	1.708	1.104	1.104	2.208
0713	10.469	6.270	1.704	1.204	704	1.908	1.104	1.104	2.208
0715	11.956	7.161	1.904	1.204	704	1.908	1.104	1.104	2.208
1010	11.408	6.833	1.404	1.204	704	1.908	1.104	1.404	2.508
1013	14.494	8.681	1.704	1.204	704	1.908	1.204	1.404	2.608
1015	16.553	9.914	1.904	1.404	704	2.108	1.404	1.404	2.808
1019	20.668	12.379	2.304	1.404	704	2.108	1.404	1.404	2.808
1021	22.723	13.610	2.504	1.404	704	2.108	1.404	1.404	2.808
1315	20.228	12.116	1.904	1.404	704	2.108	1.404	1.704	3.108
1319	25.258	15.128	2.304	1.404	704	2.108	1.604	1.704	3.308

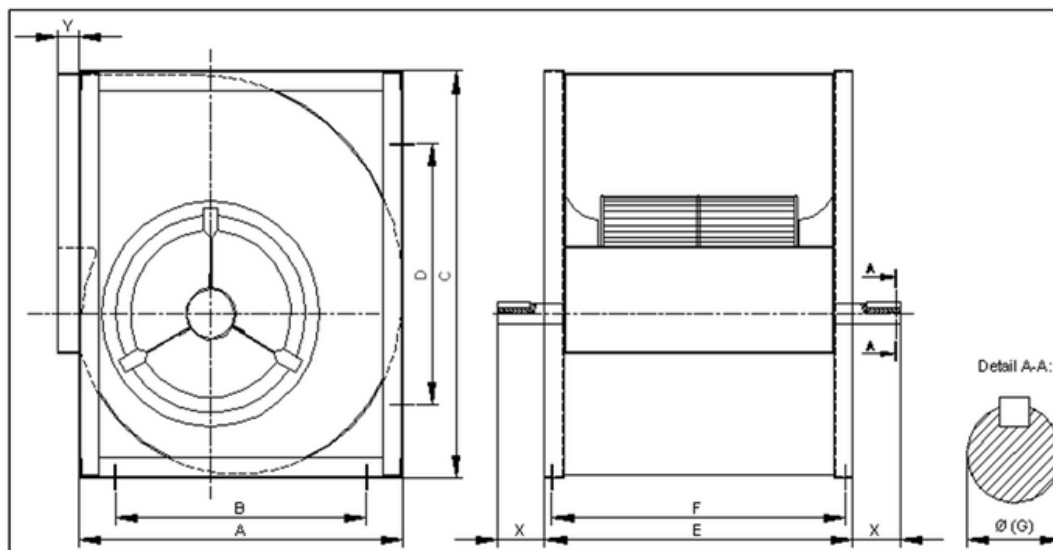




### Configuration Type 4

AirFlow		Common Dimension	Blower/Coil	Filter + Mixing Box	Total Section	Blower	Coil	Total Section
			Length (mm)			Height (mm)		
CMH	CFM	Width (mm)	A	B	C	F		F
2.326	1.393	804	904	1.208	2.112	1.608		1.608
3.697	2.214	1.104	904	1.208	2.112	1.608		1.608
5.069	3.036	1.404	1.004	1.208	2.212	1.608		1.608
6.440	3.857	1.704	1.004	1.208	2.212	1.608		1.608
6.012	3.601	1.104	1.004	1.408	2.412	1.908		1.908
CMH	CFM	Width (mm)	A	B	C	E	D	F
8.240	4.935	1.404	1.004	1.408	2.412	1.104	1.104	2.208
10.469	6.270	1.704	1.204	1.408	2.612	1.104	1.104	2.208
11.956	7.161	1.904	1.204	1.408	2.612	1.104	1.104	2.208
11.408	6.833	1.404	1.204	1.408	2.612	1.104	1.404	2.508
14.494	8.681	1.704	1.204	1.408	2.612	1.204	1.404	2.608
16.553	9.914	1.904	1.404	1.408	2.812	1.404	1.404	2.808
20.668	12.379	2.304	1.404	1.408	2.812	1.404	1.404	2.808
22.723	13.610	2.504	1.404	1.408	2.812	1.404	1.404	2.808
20.228	12.116	1.904	1.404	1.508	2.912	1.404	1.704	3.108
25.258	15.128	2.304	1.404	1.508	2.912	1.604	1.704	3.308

## FAN SPECIFICATION

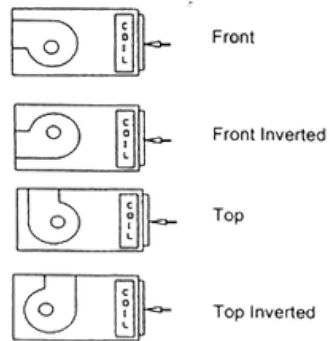


Model	AirFlow		Blower Range	Discharge Size		Motor Size Maximum	Motor Mounting	Arrangement Unit
Model	CMH	CFM	Size	H mm	L mm	kW	Width (mm)	Depth
0404	2.326	1.393	200	260	260	3	Rear	904
			225	295	295	3	Rear	904
0407	3.697	2.214	225	295	295	5	Side	904
			250	330	330	5	Side	904
0410	5.069	3.036	250	330	330	7.5	Side	1.004
			280	370	370	7.5	Side	1.004
0413	6.440	3.857	315	410	410	7.5	Side	1.004
			355	460	460	7.5	Side	1.004
0707	6.012	3.601	280	370	370	5	Side	1.004
			315	410	410	5	Side	1.004
0710	8.240	4.935	315	410	410	10	Side	1.004
			355	460	460	10	Side	1.004
0713	10.469	6.270	400	515	515	15	Side	1.004
			450	575	575	15	Side	1.204
0715	11.956	7.161	400	515	460	15	Side	1.204
			450	575	515	15	Side	1.204
1010	11.408	6.833	355	460	575	10	Side	1.204
			400	515	645	10	Side	1.204
1013	14.494	8.681	450	575	575	20	Side	1.204
			500	645	645	20	Side	1.204
1015	16.553	9.914	450	575	575	20	Side	1.404
			500	645	645	20	Side	1.404
1019	20.668	12.379	500	645	645	25	Side	1.404
			560	720	720	25	Side	1.404
1021	22.723	13.610	560	720	720	30	Side	1.404
			630	810	810	30	Side	1.404
1315	20.228	12.116	500	645	645	25	Side	1.404
			560	720	720	25	Side	1.404
1319	25.258	15.128	560	720	720	30	Side	1.404
			630	810	810	30	Side	1.404
1321	27.774	16.635	560	720	720	30	Side	1.604
			630	810	810	30	Side	1.604
1519	27.554	16.503	560	720	720	30	Side	1.604
			630	810	810	30	Side	1.604
1521	30.298	18.147	630	810	810	30	Side	1.604
			710	830	1.000	30	Side	1.604
1819	34.445	20.631	630	810	810	30	Side	1.604
			710	830	1.000	30	Side	1.604
1821	37.872	22.683	710	830	1.000	50	Side	1.804
			800	860	1.200	50	Side	1.804
1823	41.303	24.736	710	830	1.000	50	Side	1.804
			800	860	1.200	50	Side	1.804
1827	48.161	28.846	800	860	1.200	60	Side	2.004
			900	1.085	1.200	60	Side	2.004
2027	51.372	30.769	800	860	1.200	60	Side	2.004
			900	1.085	1.200	60	Side	2.004
2233	70.136	42.008	900	1.085	1.200	60	Side	2.204
			1.000	1.350	1.200	60	Side	2.204

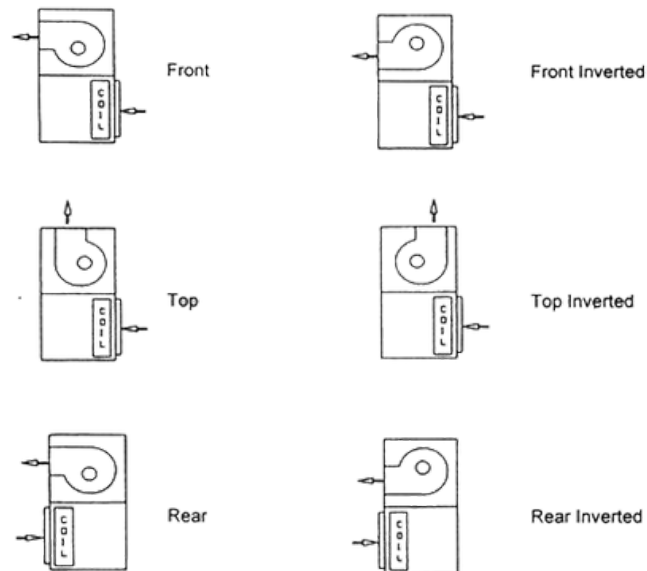


## DISCHARGE ORIENTATION

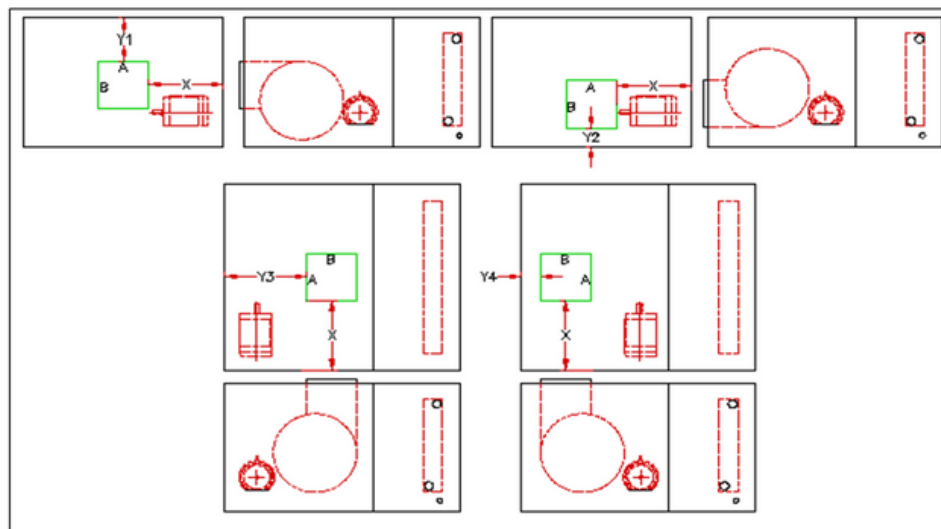
### • Horizontal Arrangement Units



### • Vertical Arrangement Units



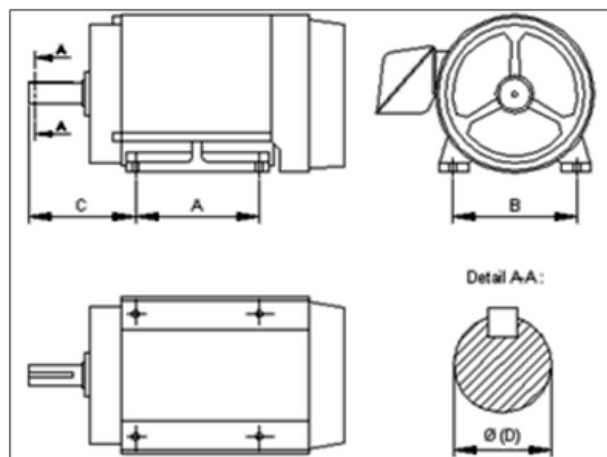
## DISCHARGE POSITION AND DIMENSION



Model	AirFlow		Blower Range	DIMENSION						
Model	CMH	CFM	Size	A	B	X	Y1	Y2	Y3	Y4
0404	2.326	1.393	200	260	260	272	247	187	130	528
			225	295	295	255	203	186	138	503
0407	3.697	2.214	225	295	295	255	203	190	138	503
			250	330	330	585	230	115	160	415
0410	5.069	3.036	250	330	330	588	175	115	130	486
			280	370	370	370	588	115	130	440
0413	6.440	3.857	315	410	410	647	135	95	142	452
			355	460	460	622	97	97	152	302
0707	6.012	3.601	280	370	370	555	472	115	305	325
			315	410	410	502	412	115	165	420
0710	8.240	4.935	315	410	410	616	412	115	213	370
			355	460	460	590	338	120	140	402
0713	10.469	6.270	400	515	515	794	212	161	235	455
			450	575	575	788	123	161	190	438
0715	11.956	7.161	400	515	515	794	213	161	235	455
			450	575	575	788	123	161	190	438
1010	11.408	6.833	355	460	460	590	638	120	277	467
			400	515	515	647	527	161	235	455
1013	14.494	8.681	450	575	575	764	423	161	190	438
			500	645	645	783	302	191	145	415
1015	16.553	9.914	450	575	575	815	423	161	290	539
			500	645	645	780	302	191	245	515
1019	20.668	12.379	500	645	645	830	302	191	245	515
			560	720	720	792	191	191	191	493
1021	22.723	13.610	560	720	720	892	191	191	191	493
			630	810	810	847	100	191	127	470

Model	AirFlow		Blower Range	DIMENSION						
Model	CMH	CFM	Size	A	B	X	Y1	Y2	Y3	Y4
1315	20.228	12.116	500	645	645	780	600	191	245	515
			560	720	720	855	490	191	191	493
1319	25.258	15.128	560	720	720	792	490	191	191	493
			630	810	810	947	364	191	127	470
1321	27.774	16.635	560	720	720	892	490	191	291	593
			630	810	810	847	364	191	227	570
1519	27.554	16.503	560	720	720	780	690	191	291	593
			630	810	810	847	564	191	230	570
1521	30.298	18.147	630	810	810	847	564	191	230	570
			710	830	830	852	450	230	190	580
1819	34.445	20.631	630	810	810	897	865	191	230	570
			710	810	810	847	743	230	150	542
1821	37.872	22.683	710	830	830	1052	740	215	275	665
			800	1030	1030	1052	540	185	165	510
1823	41.303	24.736	710	830	830	952	755	230	290	682
			800	1030	1030	952	545	182	175	610
1827	48.161	28.846	800	860	860	952	630	265	345	795
			900	1085	1085	952	400	195	211	795
2027	51.372	30.769	800	860	860	952	830	195	349	795
			900	1085	1085	952	596	195	208	711
2233	70.136	42.008	900	1085	1085	1252	796	195	308	811
			1.000	1350	1350	1252	627	195	204	650

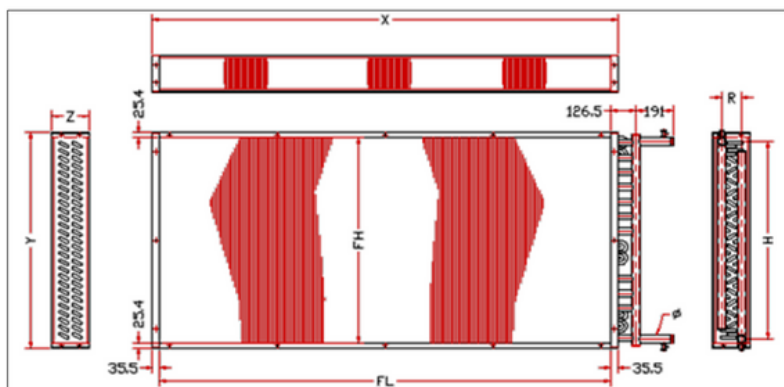
## ► FAN MOTOR SPECIFICATION



4 Pole			
Rated Power		Full Load	
		Speed	Current @ 400V
kW	hp	rpm	A
0.12	0.16	1365	0.38
0.18	0.25	1370	0.59
0.25	0.33	1350	0.71
0.37	0.50	1380	0.98
0.55	0.75	1390	1.45
0.75	1.0	1385	1.8
1.1	1.5	1415	2.7
1.5	2.0	1420	3.4
2.2	3.0	1420	4.8
3.0	4.0	1415	6.5
4.0	5.5	1445	8.1
5.5	7.5	1450	10.9
7.5	10	1455	14.4
11.0	15	1455	21.7
15.0	20	1460	27.0
18.5	25	1460	32.2
22.0	30	1455	37.9
30.0	40	1470	54.0
37.0	50	1480	66.0
45.0	60	1480	80.0
55.0	75	1480	98.0
75.0	100	1480	133.0

6 Pole			
Rated Power		Full Load	
		Speed	Current @ 400V
kW	hp	rpm	A
0.18	0.25	860	0.54
0.25	0.33	890	0.74
0.37	0.50	905	1.20
0.55	0.75	900	1.65
0.75	1.00	920	2.1
1.1	1.5	945	2.9
1.5	2.0	925	3.8
2.2	3.0	955	5.4
3.0	4.0	960	6.9
4.0	5.5	965	9.1
5.5	7.5	965	12.0
7.5	10.0	960	15.9
11.0	15	970	22.2
15.0	20	970	29.9
18.0	25	970	36.0
212.0	30	970	42.0
30.0	40	980	57.0
37.0	50	980	68.0
45.0	60	980	81.0
55.0	75	980	99.0
75.0	100	980	134.0

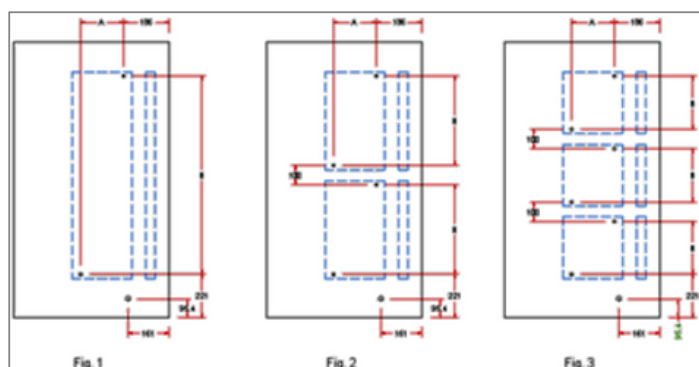
## COIL SIZE AND SPECIFICATION



Model	AirFlow		1/2" Coil			5/8" Coil			Coil Length		1/2" Coil			5/8" Coil		1/2" Coil		5/8" Coil		No. of Coil
			Coil Height								Face Area						Face Velocity			
	CMH	CFM	TH	in	mm	TH	in	mm	in	mm	ft2	m2	t2	m2	ft/sec	m/s	t/sec	m/s		
0404	2.326	1.393	16	20.0	508	14	21.0	533	20.04	509	2.78	0.26	2.92	0.27	501	2.50	477	2.38	1	
0407	3.697	2.214	16	20.0	508	14	21.0	533	31.85	809	4.42	0.41	4.64	0.43	501	2.50	477	2.38	1	
0410	5.069	3.036	16	20.0	508	14	21.0	533	43.66	1109	6.06	0.56	6.37	0.59	501	2.50	477	2.38	1	
0413	6.440	3.857	16	20.0	508	14	21.0	533	55.47	1409	7.70	0.72	8.09	0.75	501	2.50	477	2.38	1	
0707	6.012	3.601	26	32.5	826	22	33.0	838	31.85	809	7.19	0.67	7.30	0.68	501	2.50	493	2.46	1	
0710	8.240	4.935	26	32.5	826	22	33.0	838	43.66	1109	9.85	0.92	10.01	0.93	501	2.50	493	2.46	1	
0713	10.469	6.270	26	32.5	826	22	33.0	838	55.47	1409	12.52	1.16	12.71	1.18	501	2.50	493	2.46	1	
0715	11.956	7.161	26	32.5	826	22	33.0	838	63.35	1609	14.30	1.33	14.52	1.35	501	2.50	493	2.46	1	
1010	11.408	6.833	36	45.0	1143	30	45.0	1143	43.66	1109	13.64	1.27	13.64	1.27	501	2.50	501	2.50	1	
1013	14.494	8.681	36	45.0	1143	30	45.0	1143	55.47	1409	17.33	1.61	17.33	1.61	501	2.50	501	2.50	1	
1015	16.553	9.914	36	45.0	1143	30	45.0	1143	63.35	1609	19.80	1.84	19.80	1.84	501	2.50	501	2.50	1	
1019	20.668	12.379	36	45.0	1143	30	45.0	1143	79.09	2009	24.72	2.30	24.72	2.30	501	2.50	501	2.50	1	
1021	22.723	13.610	36	45.0	1143	30	45.0	1143	86.97	2209	27.18	2.52	27.18	2.52	501	2.50	501	2.50	1	
1315	20.228	12.116	44	55.0	1397	36	54.0	1372	63.35	1609	24.20	2.25	23.76	2.21	501	2.50	510	2.55	2	
1319	25.258	15.128	44	55.0	1397	36	54.0	1372	79.09	2009	30.21	2.81	29.66	2.76	501	2.50	510	2.55	2	
1321	27.774	16.635	44	55.0	1397	36	54.0	1372	86.97	2209	33.22	3.09	32.61	3.03	501	2.50	510	2.55	2	
1519	27.554	16.503	48	60.0	1524	40	60.0	1524	79.09	2009	32.95	3.06	32.95	3.06	501	2.50	501	2.50	2	
1521	30.298	18.147	48	60.0	1524	40	60.0	1524	86.97	2209	36.24	3.37	36.24	3.37	501	2.50	501	2.50	2	
1819	34.445	20.631	60	75.0	1905	50	75.0	1905	79.09	2009	41.19	3.83	41.19	3.83	501	2.50	501	2.50	2	
1821	37.872	22.683	60	75.0	1905	50	75.0	1905	86.97	2209	45.30	4.21	45.30	4.21	501	2.50	501	2.50	2	
1823	41.303	24.736	60	75.0	1905	50	75.0	1905	94.84	2409	49.40	4.59	49.40	4.59	501	2.50	501	2.50	2	
1827	48.161	28.846	60	75.0	1905	50	75.0	1905	110.59	2809	57.60	5.35	57.60	5.35	501	2.50	501	2.50	2	
2027	51.372	30.769	64	80.0	2035	54	81.0	2057	110.59	2809	61.44	5.71	62.21	5.78	501	2.50	495	2.47	2	
2233	70.136	42.008	72	90.0	2286	60	90.0	2286	134.21	3409	83.88	7.79	83.88	7.79	501	2.50	501	2.50	2	



## ► HEADER DIMENSION



Model	AirFlow		Blower Range	DIMENSION						
Model	CMH	CFM	Size	A	B	X	Y1	Y2	Y3	Y4
0404	2.326	1.393	200	260	260	272	247	187	130	528
			225	295	295	255	203	186	138	503
0407	3.697	2.214	225	295	295	255	203	190	138	503
			250	330	330	585	230	115	160	415
0410	5.069	3.036	250	330	330	588	175	115	130	486
			280	370	370	370	588	115	130	440
0413	6.440	3.857	315	410	410	647	135	95	142	452
			355	460	460	622	97	97	152	302
0707	6.012	3.601	280	370	370	555	472	115	305	325
			315	410	410	502	412	115	165	420
0710	8.240	4.935	315	410	410	616	412	115	213	370
			355	460	460	590	338	120	140	402
0713	10.469	6.270	400	515	515	794	212	161	235	455
			450	575	575	788	123	161	190	438
0715	11.956	7.161	400	515	515	794	213	161	235	455
			450	575	575	788	123	161	190	438
1010	11.408	6.833	355	460	460	590	638	120	277	467
			400	515	515	647	527	161	235	455
1013	14.494	8.681	450	575	575	764	423	161	190	438
			500	645	645	783	302	191	145	415
1015	16.553	9.914	450	575	575	815	423	161	290	538
			500	645	645	780	302	191	245	515
1019	20.668	12.379	500	645	645	830	302	191	245	515
			560	720	720	792	191	191	191	493
1021	22.723	13.610	560	720	720	892	191	191	191	493
			630	810	810	847	100	191	127	470
1315	20.228	12.116	500	645	645	780	600	191	245	515
			560	720	720	855	430	191	191	493
1319	25.258	15.128	560	720	720	792	430	191	191	493
			630	810	810	947	364	191	127	470
1321	27.774	16.635	560	720	720	892	430	191	291	593
			630	810	810	847	364	191	227	570
1519	27.554	16.503	560	720	720	780	630	191	291	593
			630	810	810	847	564	191	230	570
1521	30.298	18.147	630	810	810	847	564	191	230	570
			710	830	830	852	450	230	190	580
1819	34.445	20.631	630	810	810	897	865	191	230	570
			710	810	810	847	743	230	150	542
1821	37.872	22.683	710	830	830	1052	740	215	275	665
			800	1030	1030	1052	540	185	165	510
1823	41.303	24.736	710	830	830	952	755	230	290	682
			800	1030	1030	952	545	182	175	610
1827	48.161	28.846	800	860	860	952	630	265	345	795
			900	1085	1085	952	400	195	211	795
2027	51.372	30.769	800	860	860	952	830	195	343	795
			900	1085	1085	952	536	195	208	711
2233	70.136	42.008	900	1085	1085	1252	736	195	308	811
			1000	1350	1350	1252	627	195	204	650



## AIR FILTER

Model	2" T x 24" H x 24" W		2" T x 24" H x 24" W		Total	
	Qty	Area (m2)	Qty	Area (m2)	Qty	Area (m2)
0404	1	0.37	0	0.00	1	0.37
0407	1	0.37	1	0.19	2	0.56
0410	2	0.74	0	0.00	2	0.74
0413	2	0.74	1	0.19	3	0.93
0707	1	0.37	2	0.37	3	0.74
0710	2	0.74	2	0.37	4	1.11
0713	2	0.74	3	0.56	5	1.30
0715	3	1.11	3	0.56	6	1.67
1010	4	1.49	0	0.00	4	1.49
1013	4	1.49	2	0.37	6	1.86
1015	6	2.23	0	0.00	6	2.23
1019	6	2.23	2	0.37	8	2.60
1021	8	2.97	0	0.00	8	2.97
1315	6	2.23	3	0.56	9	2.79
1319	6	2.23	5	0.93	11	3.16
1321	8	2.97	4	0.74	12	3.72
1519	6	2.23	5	0.93	11	3.16
1521	8	2.97	4	0.74	12	3.72
1819	9	3.34	3	0.56	12	3.90
1821	12	4.46	0	0.00	12	4.46
1823	12	4.46	0	0.00	12	4.46
1827	15	5.57	0	0.00	15	5.57
2027	15	5.57	5	0.93	20	6.50
2233	20	7.43	4	0.74	24	8.18

# ***ThermalTrue***<sup>®</sup>

HVAC & R

## **Head Office :**



Kawasan Sarana Industri Terpadu,  
Jl. Industri Cikarang, Pasirgombong,  
Cikarang Utara, Bekasi, JawaBarat  
17550, Indonesia.



021-8935670/71



[salesvac@udarajadibersih.co.id](mailto:salesvac@udarajadibersih.co.id)  
[estimator@udarajadibersih.co.id](mailto:estimator@udarajadibersih.co.id)



ThermalTrue



@ThermalTrue



ThermalTrue



@ThermalTrue